

结构特点 Design features

- 外装、单端面、多弹簧、聚四氟乙烯波纹管结构；
- 内在平衡型，非推进式密封，浮动性好，密封性可靠。
- Externally mounted, single face, multi-spring, and driven by the pure PTFE bellows.
- Internal balance, non-pusher structure, good fluctuate of compensation and reliable seal.

材料 Materials(to DIN24960)

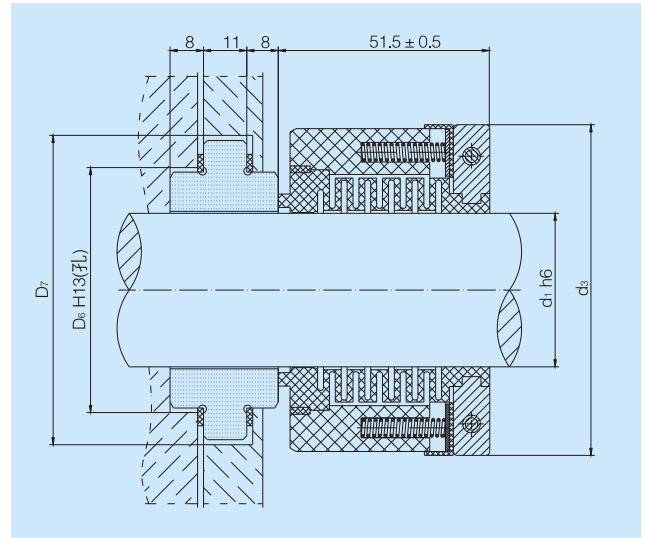
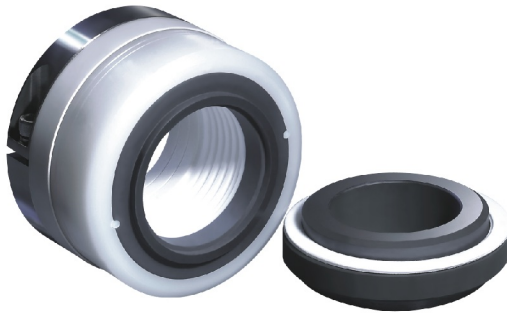
- 旋转环 Rotary Ring: Y1、Y2
- 静止环 Stationary Ring: V1、Q1、Q2
- 辅助密封 Auxiliary Seal: T1
- 弹簧及其他结构件材料 Spring and Other Parts: F、G

适用范围 Operating limits

- 压力 Pressure: 0~0.8MPa
- 温度 Temperature: 0~80°C
- 线速度 Speeds: ≤ 14m/sec

介质 Medium

强酸、强氧化剂和其它腐蚀性介质。
Strong acid, strong oxidant and other corrosive medium.



型号 Model	d1	d3	D6	D7
CN WB2-25	25	69	47	60
CN WB2-30	30	74	54	68
CN WB2-35	35	79	58	71
CN WB2-40	40	84	63	77
CN WB2-45	45	89	70	84
CN WB2-50	50	96	73	87
CN WB2-55	55	101	79	96
CN WB2-60	60	106	86	102